
SENNOSIDE



1. Introduction

Senna (*Cassia angustifolia* Vahl, *Cassia acutifolia* Delile) is the oldest known laxative drug, described in the “EBERS PAPYRUS”, the oldest surviving medical text, and was used in Arabian medicine.

Senna contains sennoside analogues, which are active compounds with laxative effects, as in rhubarb.

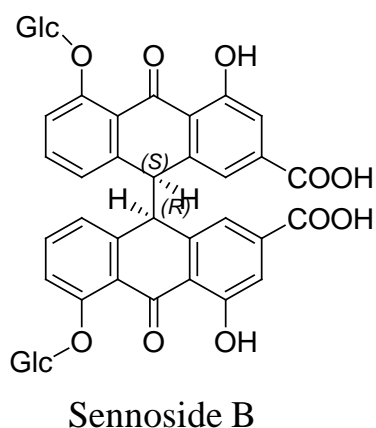
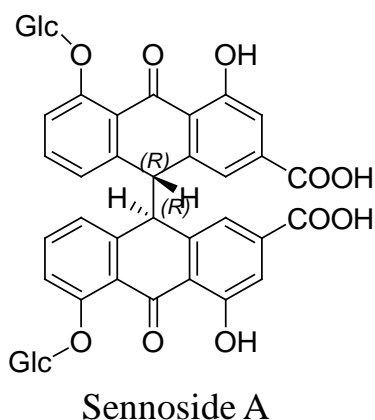
Senna was introduced to India by Arabian physicians, and has since spread to be used all over the world as a “natural mild laxative”.

These days, Senna and its extracts are used as a natural laxative drug in Western countries. In Japan, Senna was introduced as a laxative in Western medicine about 150 years ago.

Many products around the world contain Senna and its extracts, from medicines to foods.

2. Constituents of Senna extract

● Sennoside analogues



● Anthraquinone derivatives

Rhein

Aloe-emodin

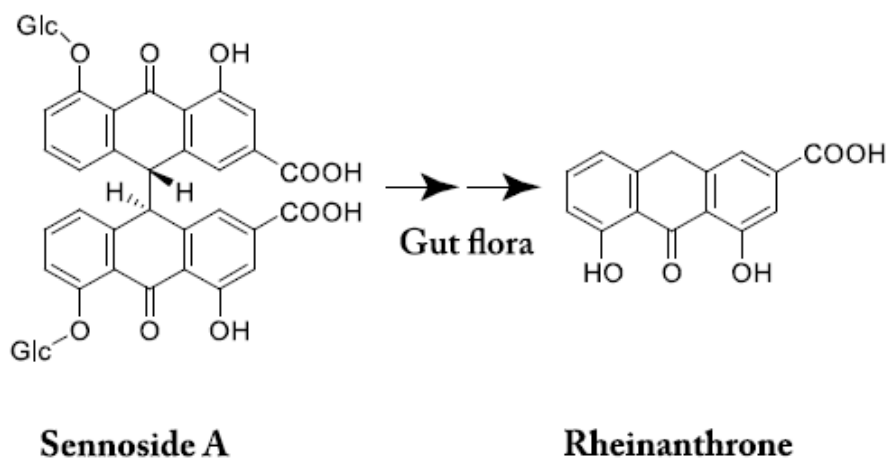
Chrysophanol

3. Pharmacological activity of Senna and Sennoside

- Natural mild laxative
- Activation of the peristaltic movements of the colon

4. Mechanism of Sennoside for improvement of constipation

In the stomach and small intestine, sennoside is not absorbed, and reaches the large intestine intact. The sennoside is then converted to rheinanthrone, an active laxative compound, by the gut flora, acting to improve constipation.



5. Usage of Sennoside

Many clinical reports have described the use of Sennoside for improving chronic constipation. Based on these reports, many medicines have been developed by pharmaceutical companies such as Novartis, Sandoz, Reckitt, etc.

As a more light-hearted use, some chocolate for weight loss contains Sennoside.

6. Product lineup

- **Calcium Sennosides 20TPC**
Sennosides Content: more than 20.0%(JPC,USP)
- **Calcium Sennosides 60 TPC**
Sennosides Content: more than 60.0%(JPC,USP)

7. Manufacturing under JP-GMP

Our sennosides products are manufactured under GMP is certified by the Ministry of Health Labour and Welfare in Japan.

Calcium Sennosides 60TPC: 226MF10108

8. Recommended dosage

The recommended dosage is normally 12~24 mg/day as sennoside A+B. In cases with a high degree of constipation, the maximum dosage is 48 mg/day.

9. Contact

- **Head Office／Factory／R&D:**
158, KINOKO, SAKURA-SHI, CHIBA, 285-0801, JAPAN
Tel: +81-43-498-0007
Fax: +81-43-498-0561
- **Tokyo Office (Sales):**
4-4-16, NIHONBASHI, HONCHO, CHUO-KU, TOKYO, 103-0023, JAPAN
Tel: +81-3-5200-1251
Fax: +81-3-5200-1256
- **URL** <http://www.tokiwaph.com/>
- **E-mail** sales@tokiwaph.co.jp