

Corosolic Acid

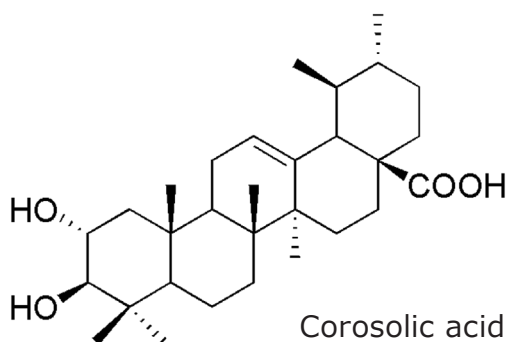
(BANABA Extract)

Scientific name : *Lagerstroemia speciosa*
Family name : Lythraceae
Other name : Pride of India, Queen Crepe Myrtle
Origin : Southeast Asia, tropical and subtropical regions of Australia



The features of Corosolic Acid (BANABA Extract)

Specification: no less than **18.0%** of Corosolic acid



- High content of characteristic components of Banaba leaves!
- Insulin-like action - lowers blood sugar!
- Reduce risk of insulin resistant!
- Fatty liver prevention!
- Anti-obesity effect! (56 mg /day)

Recommended dose

- Improvement of blood glucose level **5.0 mg/day**
- Measures against insulin resistance and fatty liver **5.6 mg/day**

Safety

Method	Results
Ames test	Negative
Acute toxicity (mouse)	LD ₅₀ ≥ 2000 mg/kg
Clinical trial	No adverse effect at 56 mg/day

Tokiwa Phytochemical Co., Ltd. [TEL]+81-43-498-0007 [E-mail]sales@tokiwaph.co.jp
International Business [FAX]+81-43-498-0561 [URL]https://www.tokiwaph.co.jp/en/

This document is for proposal use and risk of conflict with the Pharmaceutical and Medical Device Act may arise if used for promotions etc. Use with caution.