

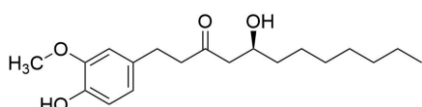
Gingerwarmer™ (Ginger Extract)



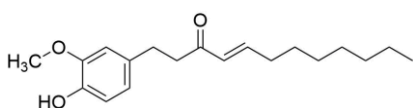
Scientific name : *Zingiber officinale*
Family name : Zingiberaceae
Genus : Zingiber
Characteristic component : Ginger polyphenol (**6-gingerol** & **6-shogaol**)

The features of Gingerwarmer™

Specification: no less than **1.7%** of ginger polyphenols



6-gingerol



6-shogaol

- **tokiwa** PHYTOCHEMICAL's original extract standardized with the characteristic component of ginger!
- Good dispersibility in water!
- Excellent for improve blood circulation!
- Additional anti-viral effect!

Recommended dose

Gingerwarmer™ : **140 mg/day**

for anti-viral effect : 1-5 mg/tablet

Safety

Method	Results
Ames test	Negative
Acute toxicity (Mice)	LD ₅₀ ≥ 2000 mg/kg

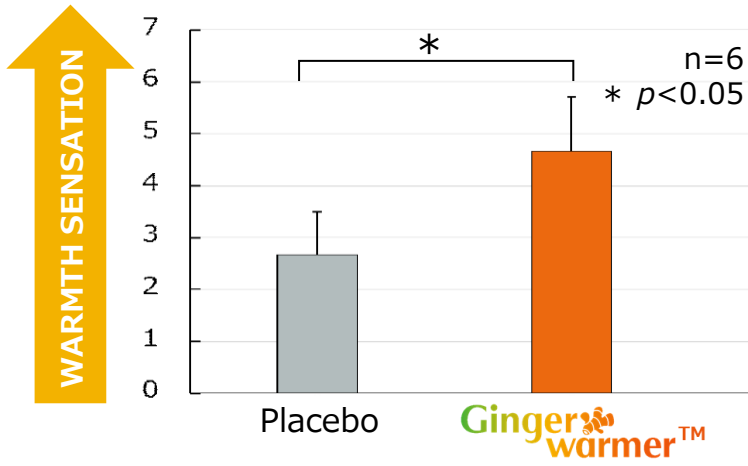
Tokiwa Phytochemical Co., Ltd. [TEL] +81-43-498-0007
International Business [FAX] +81-43-498-0561

[E-mail] intertrade@tokiwaph.co.jp
[URL] <https://www.tokiwaph.com/en/>

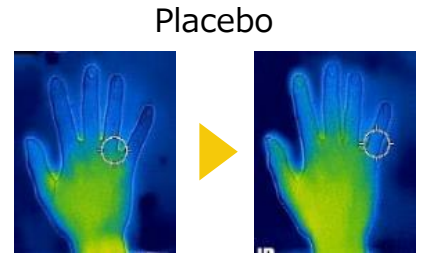
This document is for proposal use and risk of conflict with the Pharmaceutical and Medical Device Act may arise if used for promotions etc. Use with caution.

Monitor test

Improvement of Blood Circulation



Increase warmth sensation

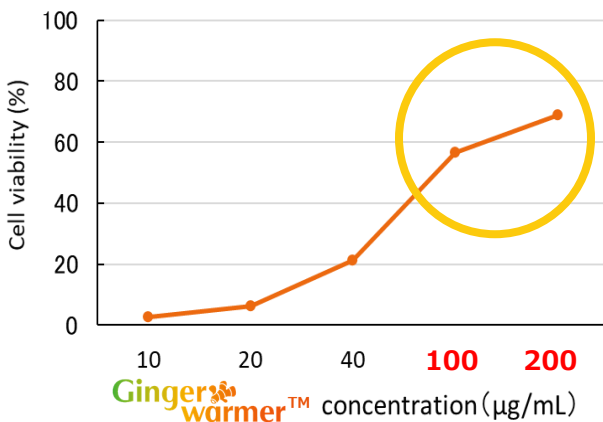


Increase skin temperature

Ginger warmer™ can improve blood circulation - as evident by increased in warmth sensation and skin temperature

In vitro test

Anti-Viral Effect



Ginger warmer™ increases viability of cell infected with SAR-CoV-2 virus by **50-70%**

Find Us Here Too



Homepage



LinkedIn



Instagram