

GINKGOLON

(Ginkgo Leaves Extract)

Scientific name	: <i>Ginkgo biloba</i>
Family name	: Ginkgoaceae
Origin	: East Asia
Traditional use	: Memory improvement, Dementia etc.
Characteristic Component	: Terpene lactone (<i>Ginkgolide A, B, & C, and Bilobalide</i>) Ginkgoflavonglycoside (<i>Kaempferol-3-O-rutinoside etc.</i>)



Specification

- No less than **24.0%** of Ginkgoflavonglycoside
 - No less than **6.0%** of Terpene lactone
- No more than 1 ppm of ginkgolic acid

Recommended dose

120 mg/day

For improvement of brain function

Safety

Method	Results
Acute toxicity (mouse)	LD ₅₀ ≥ 2000 mg/kg
Clinical trial	No adverse effect at 120 mg/day

In vitro test



- **Anti-platelet aggregation**
- **Suppressive effect of the formation of atherosclerotic plaque**
- **Beneficial effect on cardiac function**

Reduces cardiovascular-associated health issues

Biochemistry and molecular biology international 46(6), 1243-1248 (1998); J Atheroscler Thromb. 14(5), 219-225 (2007); Arzneimittelforschung., 53(6), 407-413. (2003)

Tokiwa Phytochemical Co., Ltd. 【TEL】 +81-43-498-0007
International Business 【FAX】 +81-43-498-0561

【E-mail】 intertrade@tokiwaph.co.jp
【URL】 <https://www.tokiwaph.com/en/>

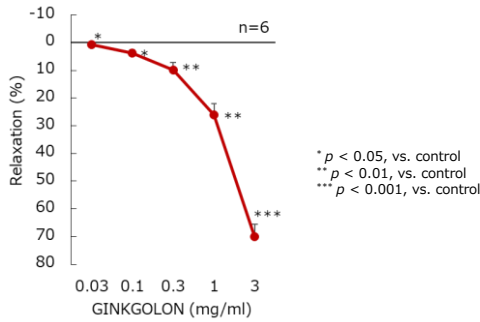
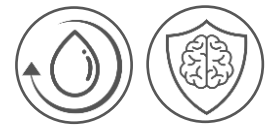
This document is for proposal use and risk of conflict with the Pharmaceutical and Medical Device Act may arise if used for promotions etc. Use with caution.

tokiwa
PHYTOCHEMICAL

2508

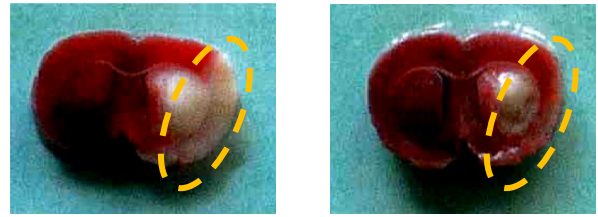
In vivo test

- Blood circulation
- Neuroprotection



Significantly relaxation of the thoracic aorta in rats.

GINKGOLON improves blood circulation



Control

GINKGOLON

Reduction of necrotic area in (white) rat brain at 100 mg/kg.

GINKGOLON has neuroprotective effect

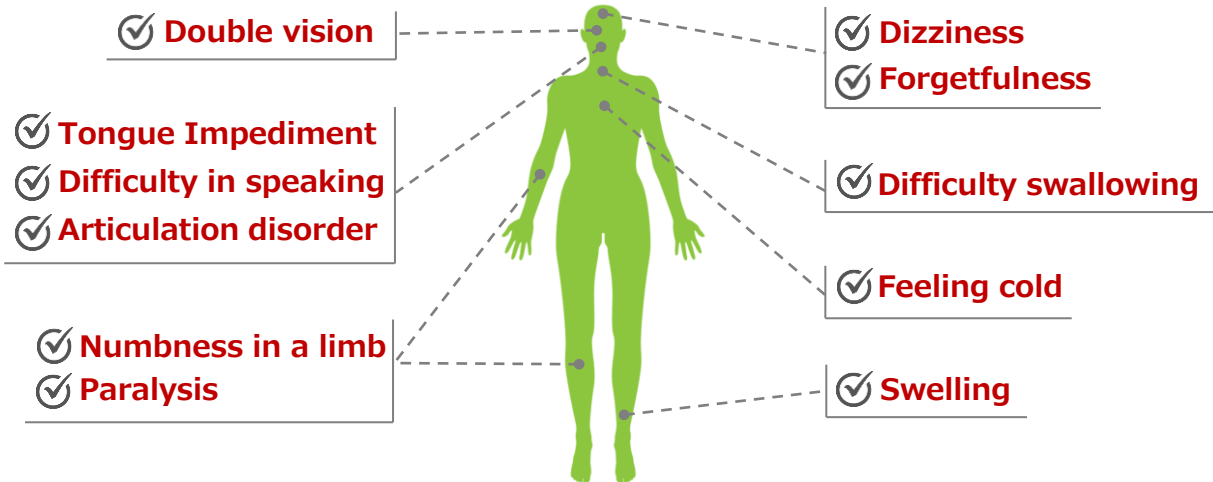
Life Sciences. 72, 2659-2667 (2003); Neurol. Res. 22, 517-521 (2000)

Clinical trial

Improvement of Brain Function (Symptoms-associated with stroke)



Subjects (n=9) with stroke showed improvement within **1-8 weeks** after intake of **120 mg/day** of **GINKGOLON**



GINKGOLON alleviates neurological and subjective symptoms associated with stroke

Jpn. J. Med. Pharm. Sci. 46(6), 1013-1016 (2001)

Find Us Here Too



Homepage



LinkedIn



Instagram