



# MATESOL

(Yerba Mate Extract)



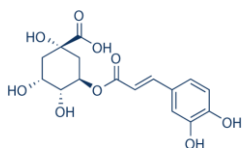
Scientific name	: <i>Ilex paraguariensis</i>
Common name	: Maté
Origin	: South America
General Usage	: Beverage (also known drinkable salad)
Characteristic Component	: Chlorogenic acids

## The features of MATESOL™

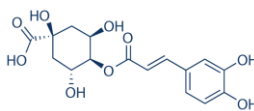
- **Caffeine-less** – Manufactured with proprietary method
- **Clinically-proven efficacy**
- **Highly soluble in water** – Perfect as beverage
- **Standardized with potent anti-obesity compounds**

### Specification:

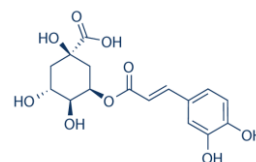
- No less than **20.0%** of Caffeoylquinic acid & Dicafeoylquinic acid
- No more than **0.5%** of Caffeine



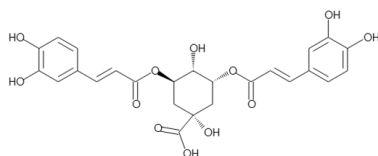
**Chlorogenic acid**  
(3-CQA)



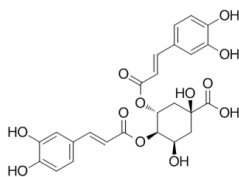
**Cryptochlorogenic acid**  
(4-CQA)



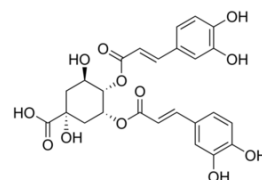
**Neochlorogenic acid**  
(5-CQA)



**3,5 Dicafeoylquinic acid**  
(3,5-diCQA)



**3,4-Dicafeoylquinic acid**  
(3,4-diCQA)



**4,5-Dicafeoylquinic acid**  
(4,5-diCQA)

**Recommended dose**

**300 mg/day**

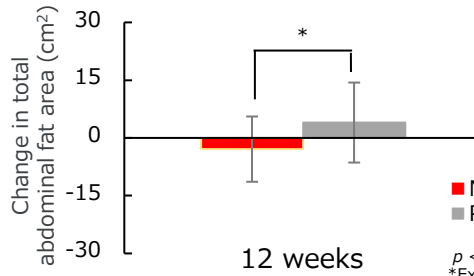
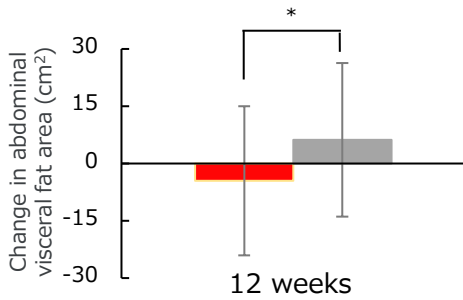
Tokiwa Phytochemical Co., Ltd. [TEL] +81-43-498-0007  
International Business [FAX] +81-43-498-0561

[E-mail] [intertrade@tokiwaph.co.jp](mailto:intertrade@tokiwaph.co.jp)  
[URL] <https://www.tokiwaph.com/en/>

This document is for proposal use and risk of conflict with the Pharmaceutical and Medical Device Act may arise if used for promotions etc. Use with caution.

# Clinical trial

## Fat Reduction



■ MATESOL™ (n=19), 300 mg/day  
■ Placebo (n=20)

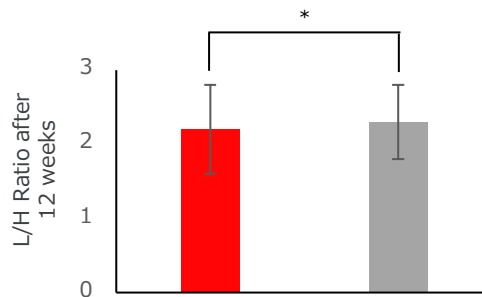
$p < 0.05$ , Significant difference between groups  
\*Excluding those who wrote about changes in lifestyle habits in their diaries

 **MATESOL reduces visceral and total abdominal fat**

Jpn. Pharmacol. Ther. 2024; 52(9) 1067-76

# Clinical trial

## Improvement LDL/HDL Ratio



■ MATESOL™ (n=13), 300 mg/day  
■ Placebo (n=10)

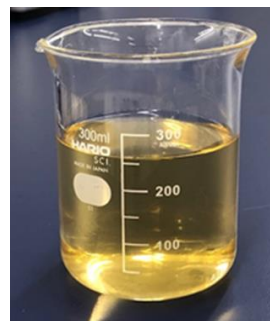
$p < 0.05$ , Significant difference between groups  
\*Excluding those who wrote about changes in lifestyle habits in their diaries and subjects with relatively high LDL cholesterol levels ( $120 \leq \text{LDL cholesterol} \leq 159 \text{ mg/dL}$ )

 **MATESOL decreases LDL-cholesterol & increases HDL-cholesterol**


Jpn. Pharmacol. Ther. 2024; 52(9) 1067-76

# Highly water-soluble

- Concentration: **300 mg/240 ml**
- pH: **approx. pH 6.5**
- Taste: **Slightly bitter & acidic**  
**Easy to drink**



Dissolves into clear solution

Find Us Here Too 



Homepage



LinkedIn



Instagram